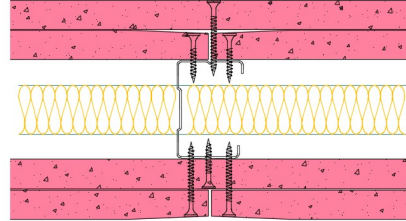


## 50-S-62(25) - SPEEDLINE System Data Sheet - Version V1 (24-10-23)

SPEEDLINE 50mm 'C' Stud Partition @600mm Ctrs,  
with 2x Siniat GTEC 15mm Fire Board each side,  
25mm APR



### System Performance Breakdown

Fire Resistance:

BS476 Part 22:1987:

Test Ref & Date or Applied Ref & Report:

Max Height:

Thickness:

Duty Grade: BS 5234: Part 2:1992:

Sound Insulation:

120/120 Minutes (Integrity/Insulation).

**BTC 17593FA - BRE Report P102396-1011C**

**Refer to Speedline Specification Clause**

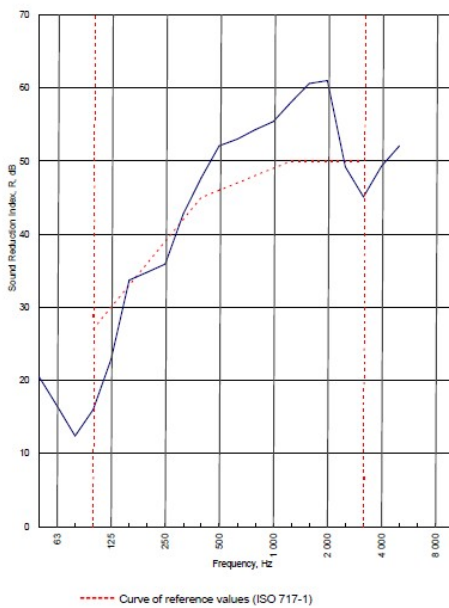
**112 mm.** (At Base Track, Excluding Finishes)

**Severe - Annexes A-F**

**46  $R_w$ dB**, Date Tested or Assessed Against - 50-S-57(25)


Test Code:  
H17500AA  
Test Date:  
26/07/2011


Freq. Hz	R dB
50	20.5
63	16.5
80	12.4
100	16.0
125	22.9
160	33.7
200	34.8
250	35.9
315	42.8
400	47.7
500	52.1
630	53.0
800	54.3
1 000	55.4
1 250	58.1
1 600	60.6
2 000	61.0
2 500	49.2
3 150	45.1
4 000	49.3
5 000	52.1
6 300	
8 000	
10 000	





Rating according to BS EN ISO 717-1:1997  
 **$R_w$  (C;Ctr) = 46 (-4;-11) dB**  
 Max dev. 11 dB at 100 Hz  
 Evaluation based on laboratory measurement results obtained by an engineering method:  
 $C_{50-3150} = -6$  dB     $C_{50-5000} = -5$  dB     $C_{100-5000} = -3$  dB  
 $C_{125-3150} = -16$  dB     $C_{125-5000} = -16$  dB     $C_{125-100-5000} = -11$  dB

TESTED AT ONE OF THE UKAS ACCREDITED LABORATORIES BELOW

B.T.C (H-Ref on Graph) 

B.R.E 

AIRO 

S.R.L 

Customer: Metsec plc Hepsec Division

BTC 17500A: Page 9 of 11

